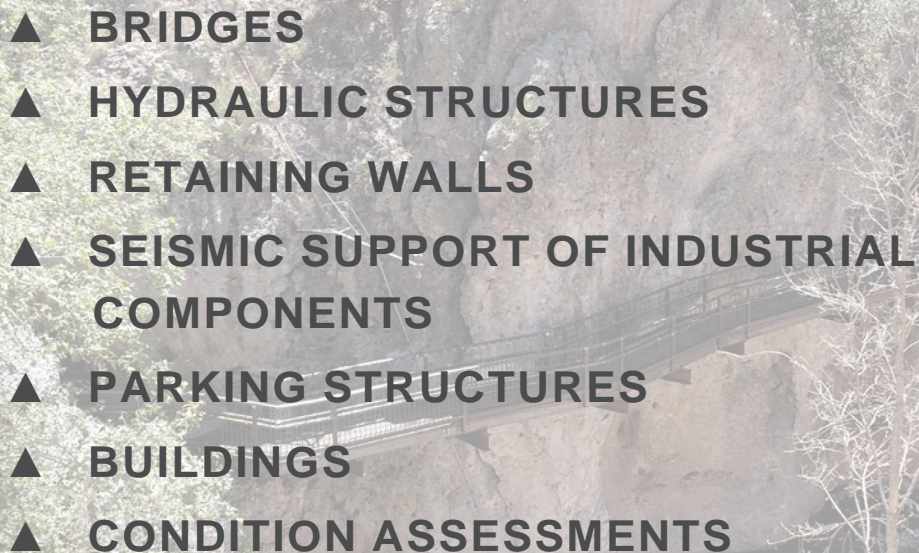


Structural Engineering Services



Bohannon  **Huston**

- ▲ BRIDGES
 - ▲ HYDRAULIC STRUCTURES
 - ▲ RETAINING WALLS
 - ▲ SEISMIC SUPPORT OF INDUSTRIAL COMPONENTS
 - ▲ PARKING STRUCTURES
 - ▲ BUILDINGS
 - ▲ CONDITION ASSESSMENTS
- 

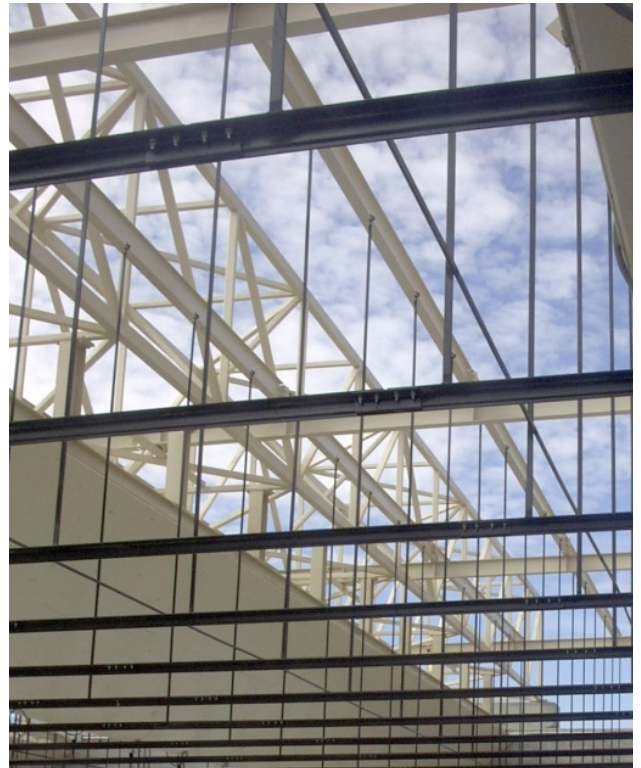


Concept to Completion

From project concept through construction, the Structural Engineering staff of Bohannon Huston, Inc., is skilled at producing safe and functional facilities that meet each client's individual needs. Our team has extensive experience with design-build, fast-track and conventional project delivery systems, and we are adept at conducting studies of existing or proposed structures, taking into consideration safety, stability, constructability, cost-effectiveness and performance life or life-cycle cost. From start to finish, BHI will get you there.

1 | ASSESSMENTS & INSPECTIONS

From minor building settlement to large-scale parking, building and bridge assessments, BHI's Structural Group is experienced with a wide range of assessments and inspections, including **new construction, special inspections and certified bridge inspections**. By first helping clients understand what they have, we can define tailored, implementable solutions to your unique project needs.



BHI designed suspended steel baffles to control stray bullets within the three-sided concrete Combat Arms Training Maintenance range located at Cannon Air Force Base in Clovis, New Mexico.

2 | REHABILITATION & RENOVATION

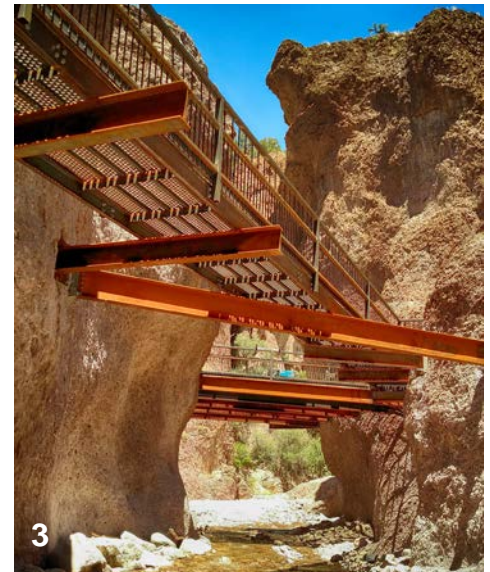
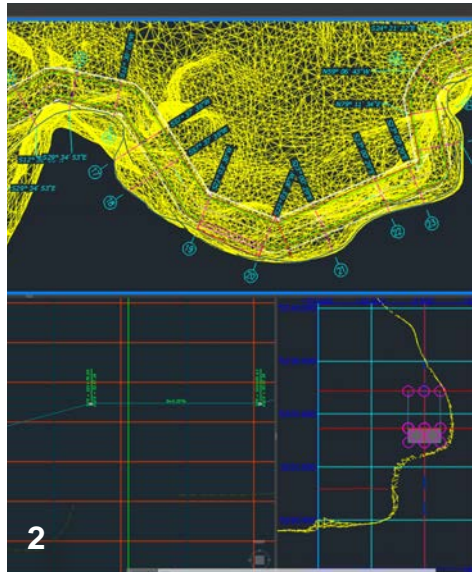
We provide design and guidance for a diverse array of building and bridge modifications and upgrades. We provide **comprehensive plans for repairs, remodels, additions and retrofits**. Get the best value for your investment by extending the life of your infrastructure.



Constructed in 1950 and listed on the National Register of Historic Places and the New Mexico State Register of Cultural Properties as part of Route 66, BHI replaced the steel girders and straddle bent with new steel framing and a joint-free deck.

DID YOU KNOW?

After the washout of the historic Catwalk Trail at Whitewater Canyon, BHI's Structural Design Group used **innovative technological methods**, including 11 different software packages, to precisely locate and design the pedestrian catwalk and oversee the execution of the construction of this highly complex Design-Build project.



The photos above show three stages of the Catwalk Trail in the Gila National Forest: (1) the existing catwalk not destroyed by flooding, (2) the design phase with Civil 3D Section Editor showing the horizontal, vertical, and cross section views of the Catwalk Design, (3) the reconstructed catwalk.

3 | DESIGN-BUILD SERVICES

BHI provides structural and civil engineering services for Design-Build (DB) projects. We work closely with the contractor and remain committed throughout the construction phase to produce construction bids and early designs in support of DB projects. And we maintain **strong relationships with leading contractors and design professionals**.

The innovative approach of designers and builders working collaboratively as a team directly benefits you, the client, with:

- ▲ Quick response times
- ▲ Confident designs and construction
- ▲ Agility and precision—there is no room for error, so our engineers are the best of the best

Designers and contractors work together to deliver best-value projects that mitigate budget- and schedule-busting change orders by ensuring constructability and accuracy.

4 | INDUSTRIAL / SEISMIC DESIGN

We design seismic bracing / supports for equipment and building components in commercial, industrial and radiological facilities. This includes **site-specific custom designs** for safe support of suspended mechanical, electrical and plumbing equipment, distribution systems and floor-mounted mechanical and electrical equipment.

BUILDING INFORMATION MODELING

BHI uses Revit Structure® by Autodesk to create structural building information models (BIM). This tool enhances the accuracy and reliability of design and construction plans and provides a complete and accurate database of the structural building for design and future building modifications and maintenance. We also use a **wide range of software tools and technology to support our diverse project designs**.

Who We Are...

The BHI Structural Engineering team works with diverse groups of owners, builders, engineers and other professionals to deliver **exceptional services to our clients**.

Our staff has in-depth expertise in designing **diverse structural project types**, from schools and government buildings to high-volume bridges, secure facilities and large community water reservoirs. We offer cost-effective designs, exemplified by our solid track record of value engineering.

Ultimately, our goal is to provide our clients and the public with **safe, functional, appealing, sustainable and economical structures, now and into the future**.



Sean Melville, PE

As a Senior Vice President and the Structural Engineering Group Leader, Sean Melville has over 20 years of experience engineering bridge solutions and integrating project elements, challenges and disciplines. From contract preparation through project close-out, Mr. Melville oversees project development and workflow with a focus on timely, accurate and high-quality contract delivery. His client-focused approach to project management ensures BHI consistently exceeds your expectations.

A History of Partnering for Success

*Since 1959, Bohannon Huston has helped public and private customers **visualize** projects, **optimize** resources, and **realize** exceptional solutions. Please contact us today to learn how we can help with your structural projects.*

New Mexico

Sean Melville, PE | Senior Vice President
smelville@bhinc.com | 505.823.1000 | 505.798.7988 fax
7500 Jefferson Street NE
Albuquerque, NM 87109

Colorado

Jared M. Lee, PE, LEED® AP BD+C | Vice President
jlee@bhinc.com | 303.799.5103 | 303.799.5104 fax
9785 Maroon Circle, Suite 140
Englewood, CO 80112

Bohannon  Huston

Albuquerque • Denver • Las Cruces

www.bhinc.com

